

COUNTRY FINANCIAL

Insurance... It's What I Do!

1212 Adams Ave, La Grande, OR
541-963-2768

NORTHWEST FURNITURE & MATTRESS

215 Elm Street La Grande • (541) 963-5310
northwestfurnitureandmattress.com

PIONEER West AGRICULTURAL SOLUTIONS

10210 Wallowa Lake Highway, La Grande, OR
541-963-WEST • pioneerwestinc.com

Kubota
Your Hometown Kubota Dealer Of Choice

Roots-n-Stones
RECONNECTING WITH YOUR SOUL

Therapeutic Products
Stones & Crystals
Botanicals

109 Elm St, La Grande, OR

A&HAA
Audiology and Hearing Aid Associates

1404 4th Street, La Grande, OR, 97850
Phone: (541) 612-7555 | lagrandehearing.org

Eagle Cap Realty

Helping people achieve their real estate dreams for over 45 years



Homes, Ranches, Commercial, Rentals

Contact Information:
1511 Adams Ave, La Grande, OR 97850
541-963-0511
www.EagleCapRealty.com

Eagle Cap Realty Property Management
541-963-1210
www.LaGrandeRentals.com

ADVERTISER LOCATIONS

<p>1. Aspire 2.0 1806 26th St, La Grande</p> <p>2. Audiology & Hearing Aid Assoc 1404 Fourth St, La Grande</p> <p>3. City of Union 1207 Adams Ave, Union</p> <p>4. Country Financial 1212 Adams Ave, La Grande</p> <p>5. Eagle Cap Excursion Train 300 Depot St, Elgin</p> <p>6. Eagle Cap Realty 1511 Adams Ave, La Grande</p>	<p>7. Final Cut Pizza & Pub 2104 Island Ave, La Grande</p> <p>8. GR Urgent Care 10303 S Walton Rd, La Grande</p> <p>9. High Country Realty Professionals 1207 Adams Ave, La Grande</p> <p>10. K Voelz Wines 1104 Jefferson Ave, La Grande</p> <p>11. Northwest Furniture 215 Elm St, La Grande</p> <p>12. Outstanding Computer Repair 10210 Wallowa Lake Hwy, La Grande</p> <p>13. Pioneer West 10210 Wallowa Lake Hwy, La Grande</p>	<p>14. Press Room Coffee & Books 1124 Washington Ave, La Grande</p> <p>15. Roots-n-Stones 109 Elm St, La Grande</p> <p>16. Shelter From The Storm 10901 Island Ave, La Grande</p> <p>17. Side A Brewing 1219 Washington Ave, La Grande</p> <p>18. Sure Shot Virtual Range 10200 W 1st St, Ste A, Island City</p> <p>19. Union County Chamber of Commerce 207 Depot St, La Grande</p>
---	--	--

UNION COUNTY
CHAMBER OF COMMERCE

UNION COUNTY
community map

VisitUnionCounty.org

Cove | Elgin | Imbler | Island City | La Grande
North Powder | Summerville | Union

GR URGENT CARE
NO APPOINTMENT NEEDED

10303 S. WALTON ROAD
LA GRANDE, OR 97850
541.962.QUICK

OPEN EVERYDAY
8AM - 6PM

FINAL CUT PIZZA PUB

Pizza! Beer! Arcade!
Wings! Salad Bar! Oregon Lottery!

2104 Island Ave, La Grande | (541) 962-1000

PRESS ROOM
COFFEE & BOOKS LA GRANDE, OREGON

d'lish food and drink • outdoor patio
• local history, local authors

thepressroomcoffee.com • 1124 Washington Ave, La Grande

Experience Eastern Oregon Wines

KV
K Voelz Wines
1104 Jefferson Ave
La Grande, OR 97850

Robyn Dix, CCP
Certified Life Coach

Aspire 2.0

(541) 805-0959
coachrobndixccp@gmail.com
Or find me on Facebook!

It's not about being the best,
It's about being better than you were yesterday.

SURE SHOT Are You Ready To **LEVEL UP?** **PRIMERS**

10200 W 1st St, Island City, OR • 541-786-9058 • sureshotvirtualrange.com

Eagle Cap Excursion Train

GO! WHERE CARS CAN'T TAKE YOU!

Schedule and book online, eaglecaptrainrides.com

Welcome to beautiful Northeast Oregon!

Union City Hall
342 S Main St., Union, OR 97883
Mailing Address: PO Box 529, Union, OR 97883
541-562-5197 • cityofunion.com

Questions about healthy relationships?
We are confidential and trained to help!

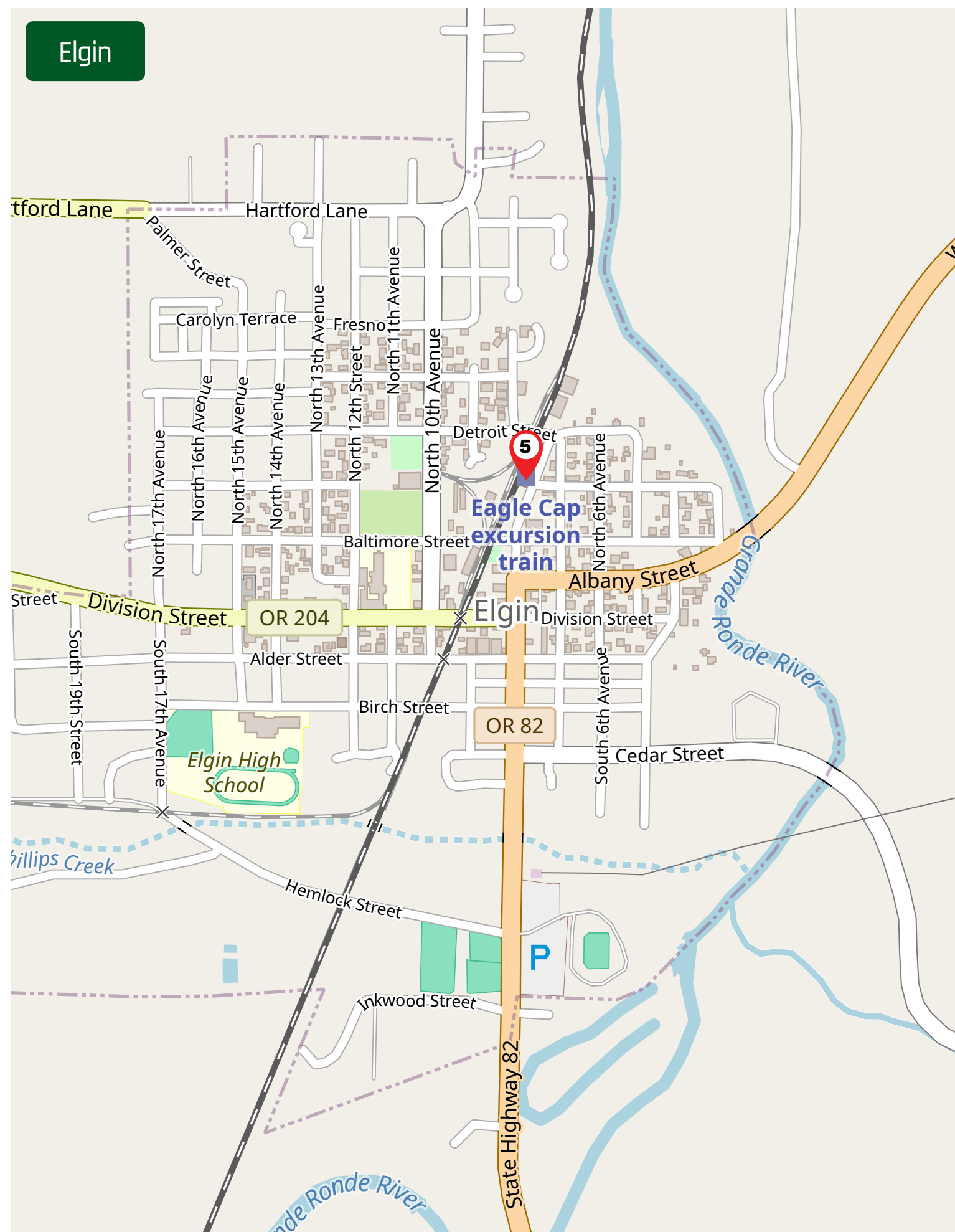
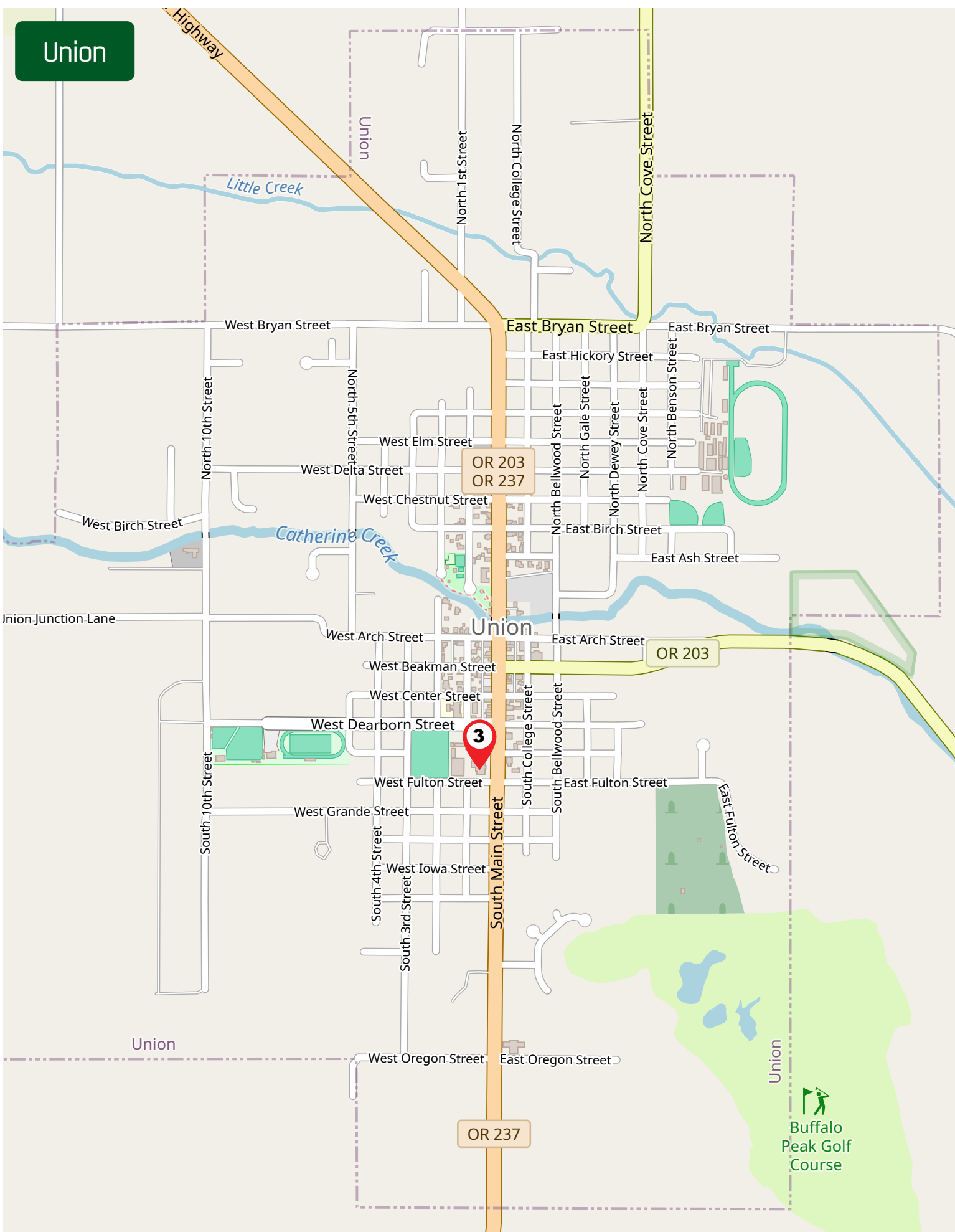
Mail: P.O. Box 173
Office: 10901 Island Avenue
La Grande, OR 97850
Office: (541) 963-7226
Hotline: (541) 963-9261

Shelter From The Storm
Your Safety is important to us!

When your computer is in despair, call

OUTSTANDING COMPUTER REPAIR
541-963-5893

Serving Union and Baker County



UNION COUNTY

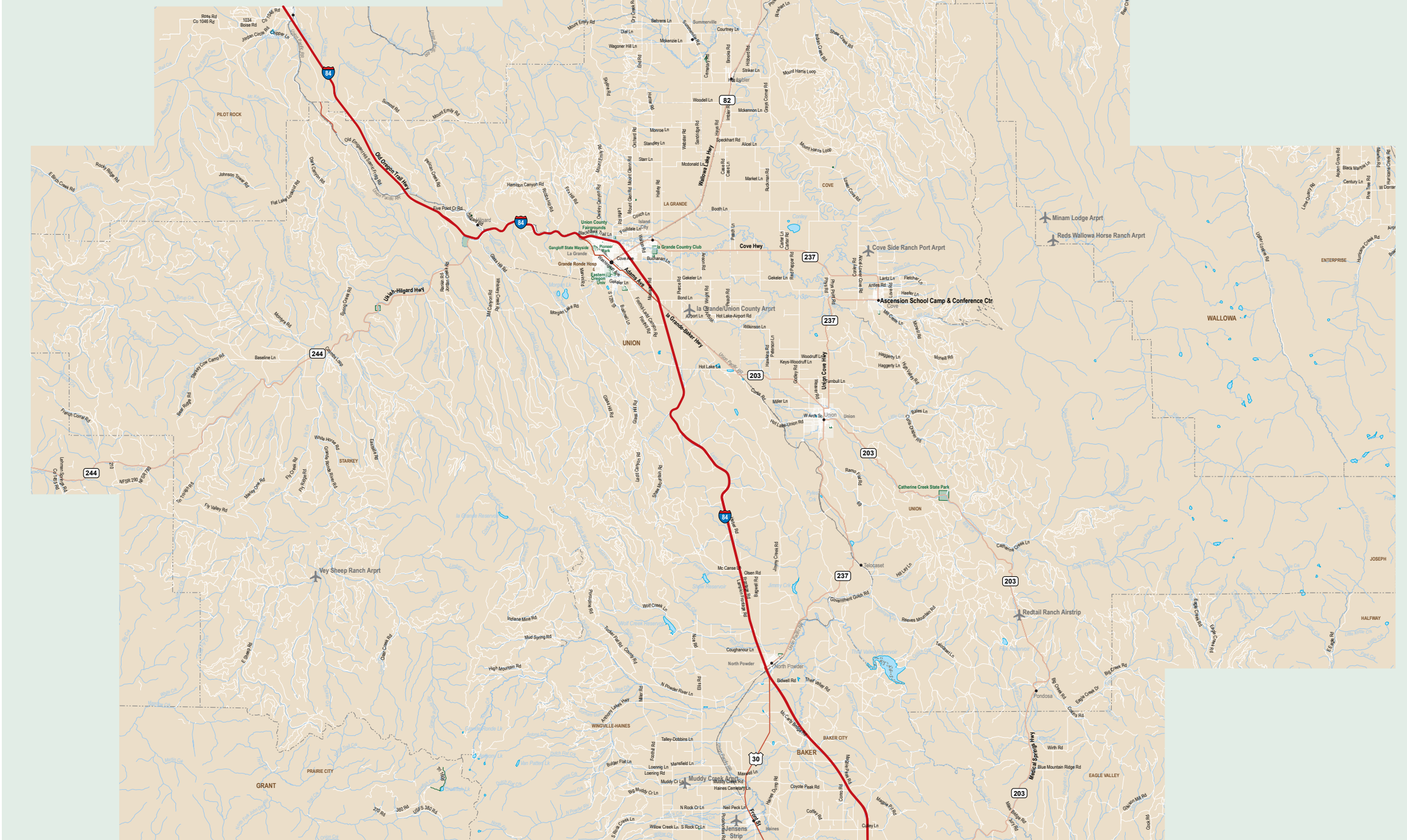
OREGON

POPULATION
26,196

Population per sq mile = 12.9
Total Sq. miles = 2,036.94

La Grande: 13,026 Island City: 1,144 North Powder: 504
Union: 2,152 Cove: 620 Summerville: 119
Elgin: 1,717 Imbler: 245

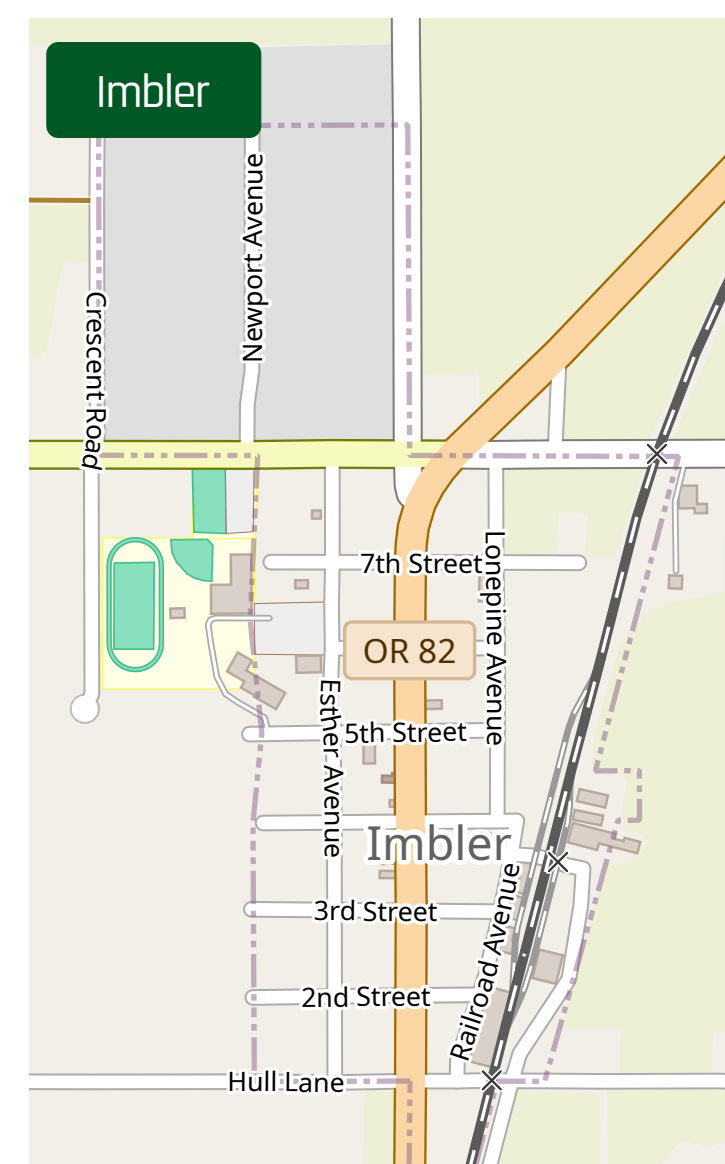
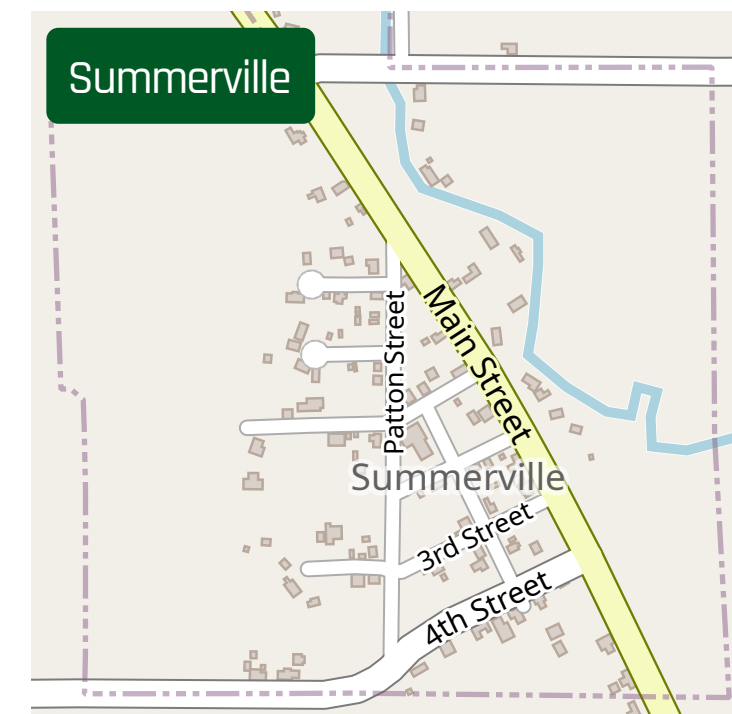
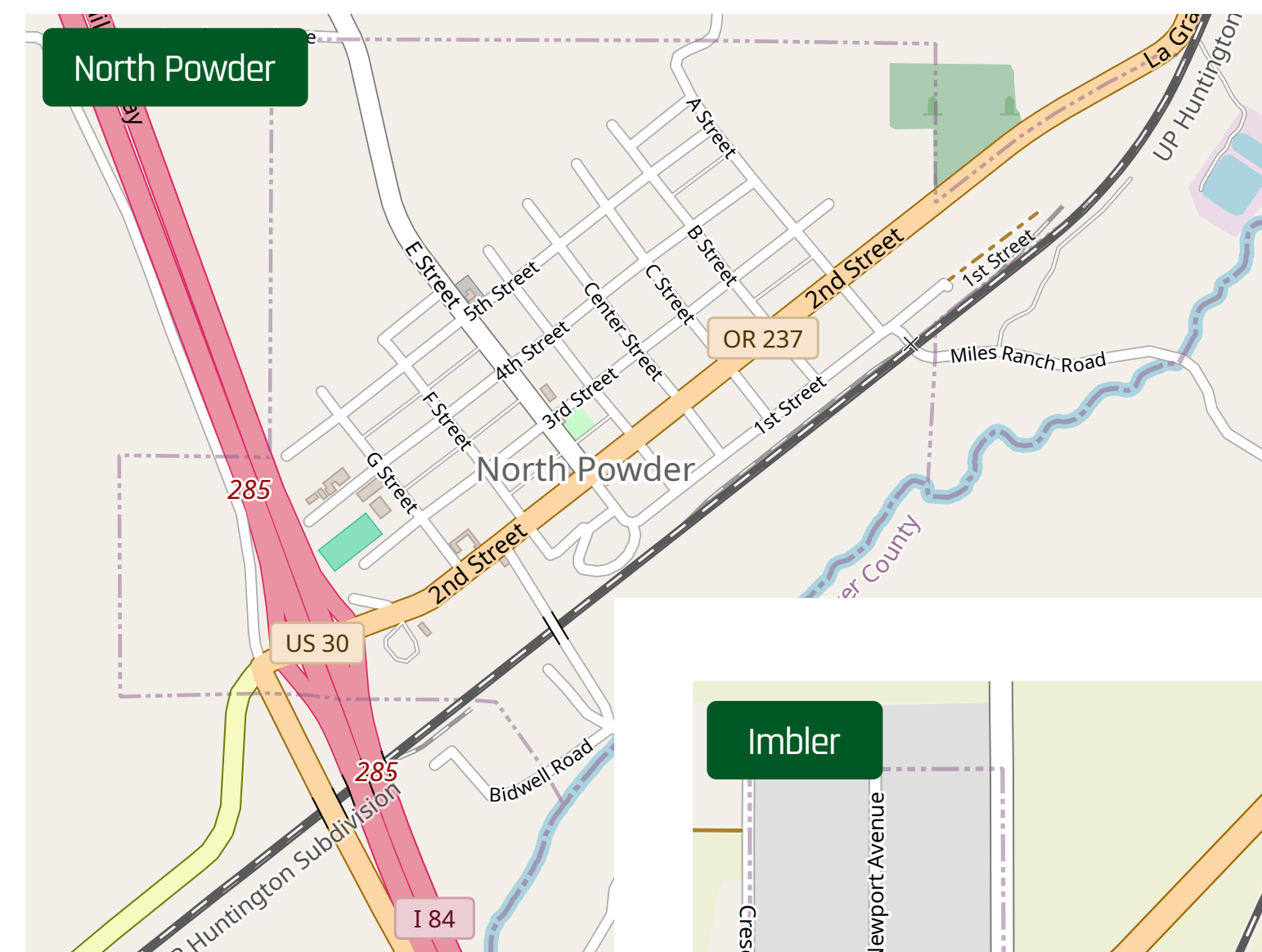
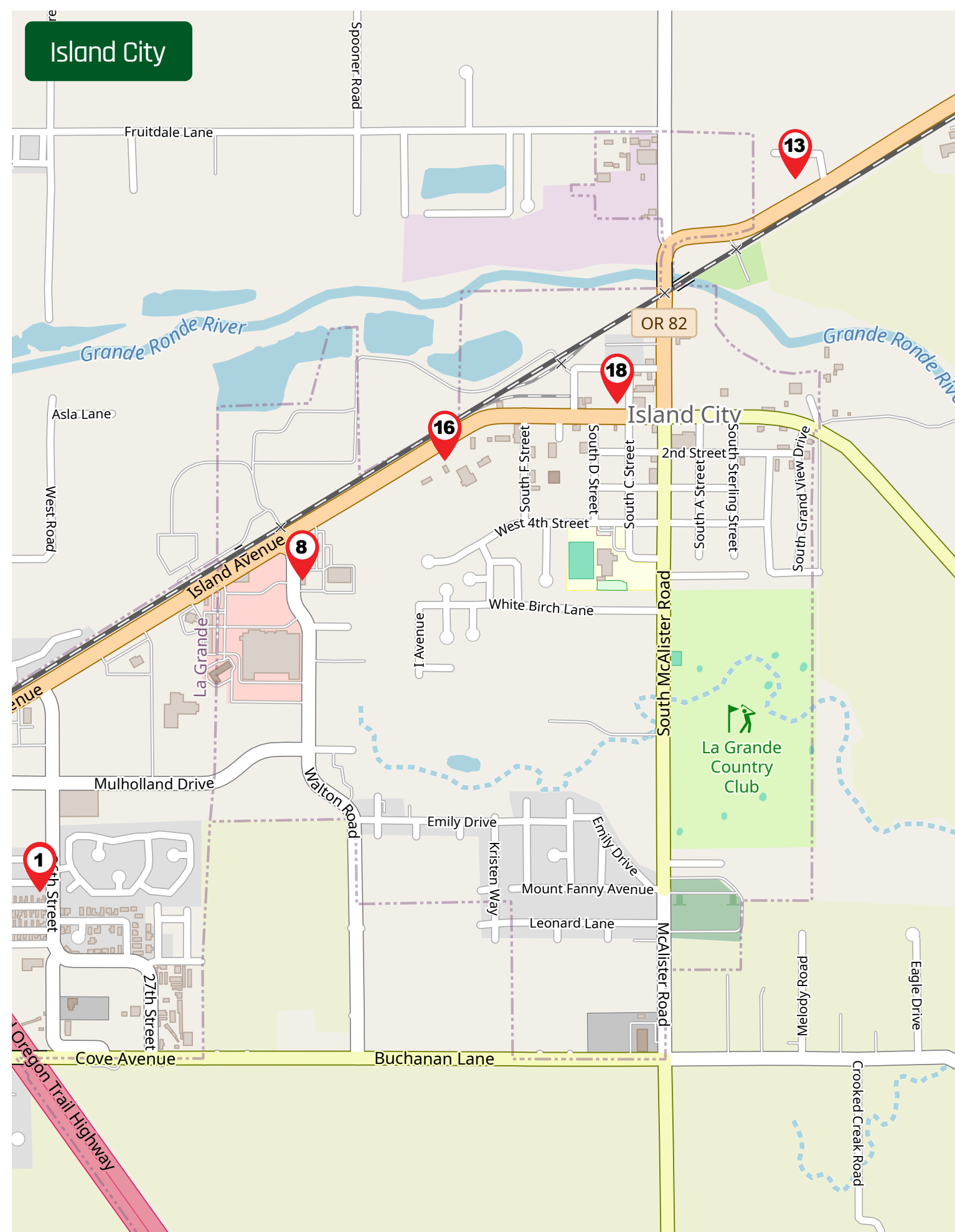
SOURCE: 2010 U.S. CENSUS BUREAU STATISTICS



High Country
REALTY PROFESSIONALS

Selling Eastern Oregon

1207 Adams Ave
La Grande, OR
www.highcountry-realty.com
541-663-9000



UNION COUNTY

Nestled in a beautiful corner in Northeastern Oregon, Union County is proudly the commercial, cultural, and educational hub of the region. Union County may be rural-frontier, but it certainly boasts the modern amenities to make life a living pleasure.

Union County encompasses 1,300,480 acres of diverse landscapes including fertile soil, timbered slopes, grazing land, and snow-capped mountain peaks. These geographic features have remained unchanged over the past two hundred years and have made the county attractive to both Native Americans and settlers.

The Blue Mountains, one of Oregon's oldest and largest mountain ranges, stretch through nine counties in Eastern Oregon and Washington. The Blues are renowned for their deep blue appearance resulting from atmospheric conditions and run along the western boundaries of Union County. The county's largest town, La Grande, is situated at the base of these mountains.

On the opposite side of Union County stand the Willowa Mountains, an expansive alpine range shared by Union, Baker, and Willowa counties. The Indian, Grande Ronde, and Powder Valleys separate the two mountain boundaries from north to south. Other smaller valleys, plains, and plateaus, are mainly used for agricultural, recreational, or grazing purposes.

The Grande Ronde Valleys are the county's most populated region and are bisected by the Grande Ronde River, one of Oregon's longest rivers. The Powder River flows through the southeast corner of the county near North Powder, while the Willowa and Minam Rivers enter the county to the north.

The Grande Ronde Valley is a fertile plain that stretches 35 miles north-south from Pumpkin Ridge to Pyles Canyon and is 15 miles wide from Cove to the mouth of the Grande Ronde River's canyon. It is oval-shaped and lies at the heart of Union County, with an elevation that ranges from 2,700 to 3,000 feet, peaking at 2,713 feet at the La Grande Airport.

The Blue and Willowa Mountains tower dramatically on either side of the valley floor. John C. Fremont described the Grande Ronde Valley in his diary entry for October 17, 1843, as "a beautiful level basin or mountain valley covered with good grass, on a rich soil, abundantly watered and surrounded by high and well-timbered mountains and its name descriptive of its form - the 'great circle.'" The valley is dominated by Mount Emily, Mount Harris, and Mount Fanny, which range in height from 5,372 to 7,153 feet. The surrounding mountains are densely forested, with the Eagle Cap Wilderness in the Willowa Range boasting several peaks as high as 10,000 feet.

The valley floor is mostly table-flat and composed of black sandy loam, which is incredibly fertile and produces a variety of crops, including grasses, grains, vegetables, and fruits. Wet marshes on the southern edge of the valley form Ladd Marsh, a significant bird and wildlife sanctuary.

LA GRANDE

Welcoming and vibrant atmosphere

La Grande combines small-town charm with a range of amenities and recreational opportunities. Whether exploring the historic commercial district, enjoying outdoor activities, or attending cultural events, residents and visitors can experience the welcoming and vibrant atmosphere of this eastern Oregon city.

La Grande is a vibrant community in Eastern Oregon, with a population of approximately 13,000 residents. It serves as a hub for commerce, education, and culture in the region while preserving its historical character and natural beauty.

ISLAND CITY

Kick-off point of the Hells Canyon Scenic Byway

Island City, situated in a picturesque location, offers the perfect blend of natural beauty and convenient access to nearby amenities. This charming city in Union County captivates visitors with its scenic surroundings. The area provides abundant opportunities for outdoor enthusiasts. The Grande Ronde River invites fishing, boating, and wildlife observation. For those seeking adventure, the surrounding mountains offer breathtaking vistas and serve as a playground for hiking, camping, and skiing enthusiasts.

COVE

An enchanting Gem of Oregon's Grande Ronde Valley

Nestled on the eastern edge of the breathtaking Grande Ronde Valley in Union County, Oregon, lies a hidden slice of paradise known as Cove. With its rich history, local charm, and captivating attractions, this little community invites you to immerse yourself in its beauty. Cove is a small community, its tight-knit population of approximately 680 residents within city limits, and an additional 1,200 people in the surrounding area make it a vibrant and thriving place to call home. In-town businesses cater to essential needs while also offering delightful extras.

SUMMERVILLE

Small-town charm and natural beauty

Summerville is a small town situated at the north end of the Grande Ronde Valley and is an ideal destination for those seeking a peaceful and picturesque setting with access to outdoor recreation.

IMBLER

Picturesque surroundings and community spirit

Imbler's small-town atmosphere, beautiful surroundings, and access to outdoor amenities make it an appealing place for those seeking a peaceful and close-knit community. Whether enjoying the local schools, participating in the 4th of July festivities, or exploring the natural wonders of the area, residents and visitors can experience the charm and tranquility that Imbler has to offer.

NORTH POWDER

A scenic beauty of eastern Oregon

North Powder is situated in the southeastern part of Union County, near the base of the Elkhorn Mountains. With a population of around 500, it offers a peaceful and rural setting. The town is surrounded by natural beauty, including forests, mountains, and rivers, providing opportunities for outdoor activities like hiking, fishing, and wildlife observation.

UNION

Nestled at the base of the Willowa Mountains

Union is a community with a rich historic past, evidenced by elegant Victorian homes and brick buildings gracing the tree-lined city streets. Downtown Main Street is a designated National Historic District, but the city is not without modern amenities, including a state-of-the-art health center, a tournament-ready athletic complex and Buffalo Peak Golf Course.

Stop by one of the many U-Pick farms stands for fresh berries and produce for a farm-to-table experience, or even stay in a farm cottage at one of the local farms for a truly organic experience. Before your adventure ends, take a soak in the nearby hot springs.

ELGIN

The Jewel of the Blue Mountains

Located along the Hells Canyon Scenic Byway, Elgin sites in the Indian Valley, nestled against a backdrop of mountains – the Willows to the east and Blues to the west, with the Grande Ronde River flowing through it. Elgin, is a small city with a population of approximately 1,700 people, located in the northeastern part of the state. In recent years, the city has been working on revitalizing its downtown area and promoting tourism. The historic Elgin Opera House, which was built in 1912, has been renovated and is now used for various events, including concerts, plays, and weddings.

The Elgin Stampede, a rodeo event that takes place every July, is another popular attraction in the area.

Elgin is also known for its proximity to outdoor recreation opportunities. The nearby Willowa-Whitman National Forest offers hiking, camping, fishing, and hunting, while the Grande Ronde River is a popular destination for rafting and kayaking. In the winter, the Mount Emily Recreation Area offers snowmobiling and cross-country skiing.