

# 5 minutes from Town to Trails



Mount Emily Recreation Area (MERA) offers 3,669 acres of outstanding, year 'round forest recreation, just two miles from downtown La Grande, Oregon.

Enjoy trails dedicated for ATV and ORV use, or use pedal power for mountain bike trails. Horseback riders, hikers, snowshoers, and cross-country skiers can also enjoy marked trails, offering both gentle routes and challenging terrain. The views are spectacular!

**Getting there:** Access OHV-only trails from Foxhill Road. Non-motorized access via Owsley Canyon Road. Igo Lane provides trailhead access for ATVs, bicycles, hikers, and horses (no access for ORVs). Get maps at [lagrandenaturally.com](http://lagrandenaturally.com) or at the Union County Chamber.

# Year 'Round Recreation

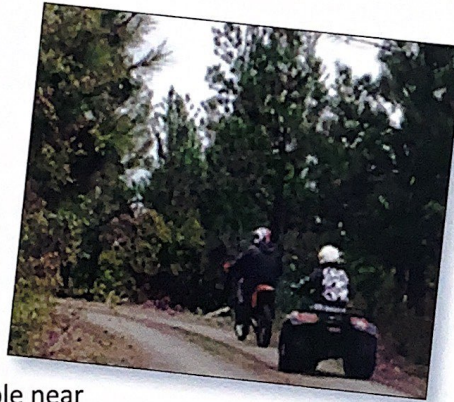


## Non-motorized Trails

With nearly 12 miles of single track, and 12 miles of double track, mountain bicyclists, trail runners, hikers, and equestrians enjoy challenging terrain separate from motorized trails.

## OHV Trails

Off-road trails offer more than 50 miles that deliver stunning views of the Grande Ronde Valley sweeping from Mt. Emily's foothills. Picnicking and a few primitive campsites are available near the trailheads. Be ready to climb a 17% grade to reach the campground. (ATV stickers required.)



## Winter Recreation

In the winter months, back country skiing and snowshoeing are popular in the mid- to high-elevations. Ski routes range from low angled climbs and descents along double track roads and open areas to very steep black diamond runs through glades and natural openings.

## Naturally Yours

Wildflowers are typically in full bloom from April to June. Deer, elk, black bears, and many species of birds and other wildlife inhabit MERA year 'round. Great hiking when trails are snow-free, usually March through November.

